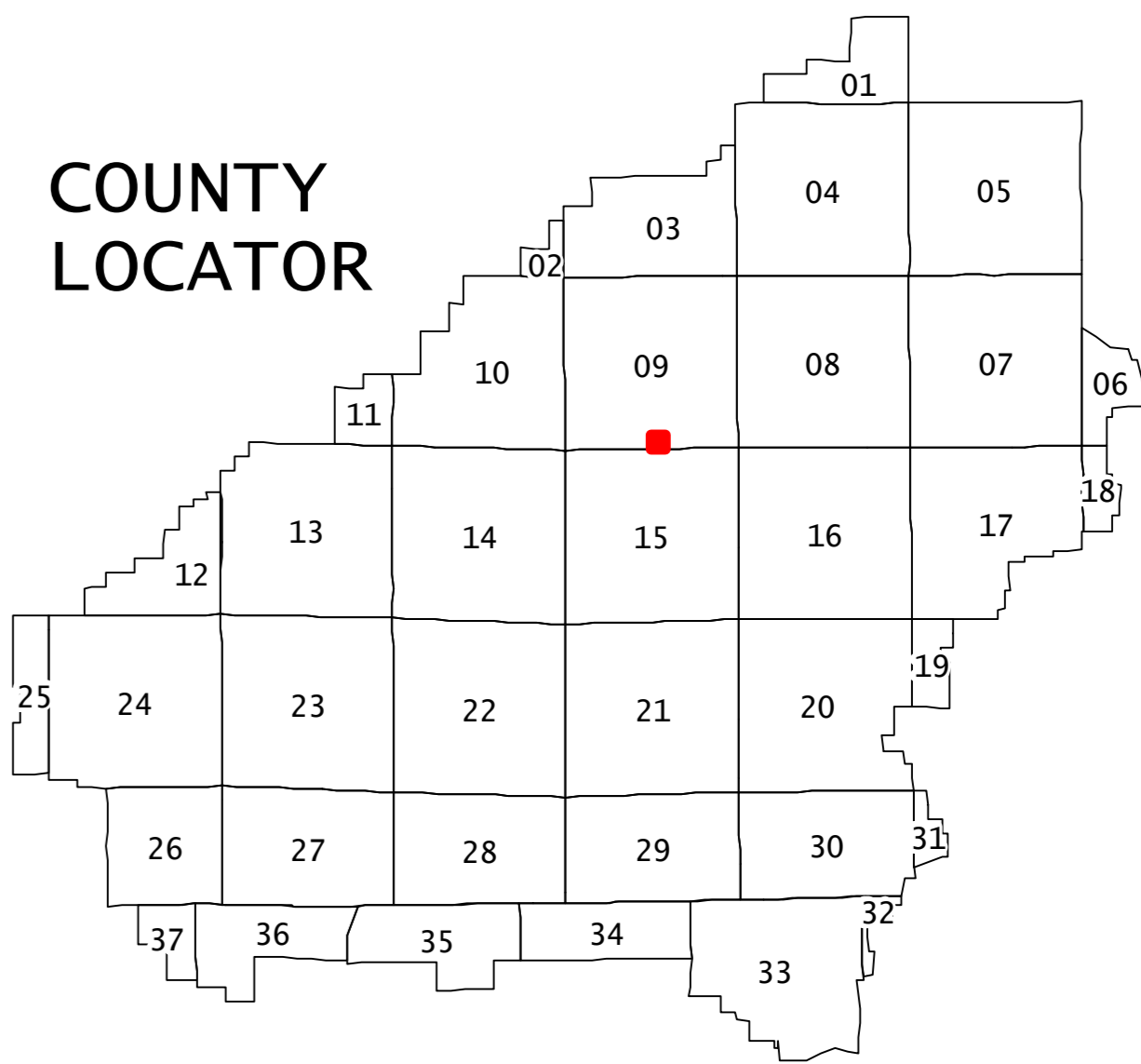


SHELBY COUNTY



COUNTY LOCATOR

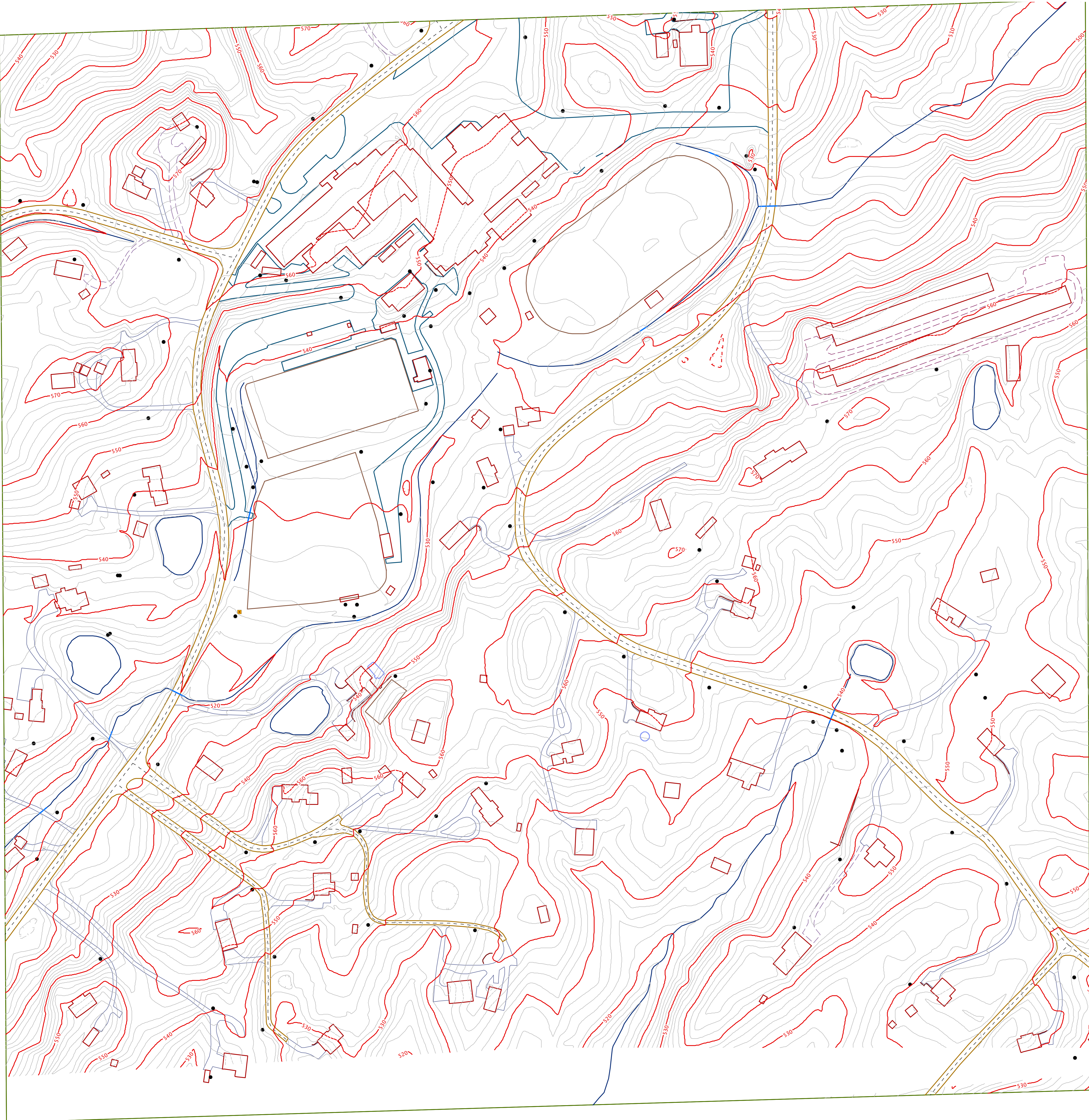


|             |             |             |
|-------------|-------------|-------------|
| 09-08-33-01 | 09-08-34-02 | 09-08-34-01 |
| 09-08-33-04 | 09-08-34-03 | 09-08-34-04 |
| 15-02-04-01 | 15-02-03-02 | 15-02-03-01 |

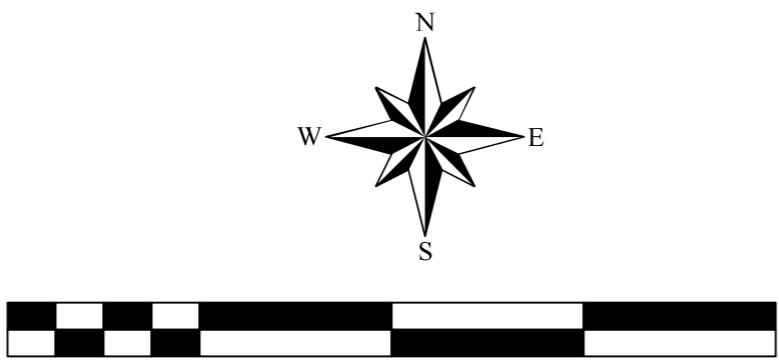
LEGEND

|  |                             |                            |
|--|-----------------------------|----------------------------|
| CONTOUR INDEX                            | TRANSMISSION OUTLINE        | MISCELLANEOUS_FEATURES     |
| CONTOUR INDEX DEPRESSION                 | TRANSMISSION TOWER          | QUARRY_OUTLINE             |
| CONTOUR INDEX HIDDEN                     | BUILDING_UNDER_CONSTRUCTION | RETAINING_WALL             |
| CONTOUR INDEX OBSCURED                   | BUILDINGS                   | STORAGE_STRUCTURE          |
| CONTOUR INDEX OBSCURED DEPRESSION        | CULVERT                     | SWIMMING_POOL              |
| CONTOUR INTERMEDIATE                     | DRAIN                       | UNDER_CONSTRUCTION_OUTLINE |
| CONTOUR INTERMEDIATE DEPRESSION          | HYDRO_HIDDEN                | AIRPORT_PAVED              |
| CONTOUR INTERMEDIATE HIDDEN              | SWAMP                       | BRIDGE                     |
| CONTOUR INTERMEDIATE HIDDEN DEPRESSION   | WATER_LINEAR                | RAILROAD                   |
| CONTOUR INTERMEDIATE OBSCURED            | WATER_POLYGONS              | ROAD_CENTERLINE            |
| CONTOUR INTERMEDIATE OBSCURED DEPRESSION | ATHLETIC_FIELD_COURT        | ROAD_PAVED                 |
| ANTENNA                                  | ATHLETIC_FIELD_OUTLINE      | ROAD_UNPAVED               |
| ELECTRIC_BOX                             | CEMETERY                    | ROAD_UNPAVED_TRAIL         |
| FIRE_HYDRANT                             | CONCRETE_SLAB               | SIDEWALK                   |
| LIGHT_POLE                               | DOCK                        | DRIVE_PAVED                |
| POWER_POLE                               | FENCE                       | DRIVE_UNPAVED              |
| TRANSMISSION_LINE                        | MISCELLANEOUS               | PARKING_PAVED              |
|  |                             | PARKING_UNPAVED            |

SECTION 34  
TOWNSHIP 19 SOUTH RANGE 1 WEST  
09-08-34-03  
MAP NUMBER



1. PHOTOGRAMMETRIC MAPPING CREATED FROM AERIAL PHOTOGRAPHY DATING JANUARY 2006.
2. 1983 NORTH AMERICAN DATUM, ALABAMA COORDINATE SYSTEM, WEST ZONE
3. GROUND CONTROL SUPPLIED BY MAXWELL ENG.
4. DASHED CONTOURS ARE APPROXIMATE DUE TO DENSE VEGETATION



WARNING: BECAUSE OF VARIOUS PLOTTER LIMITS & SETTINGS THE PLOT SCALE MAY NOT EQUAL THE PUBLISHED MAP SCALE OF 1" = 100'

CONSULTING BY  
G-SQUARED L.L.C.  
WWW.GSQMAP.COM