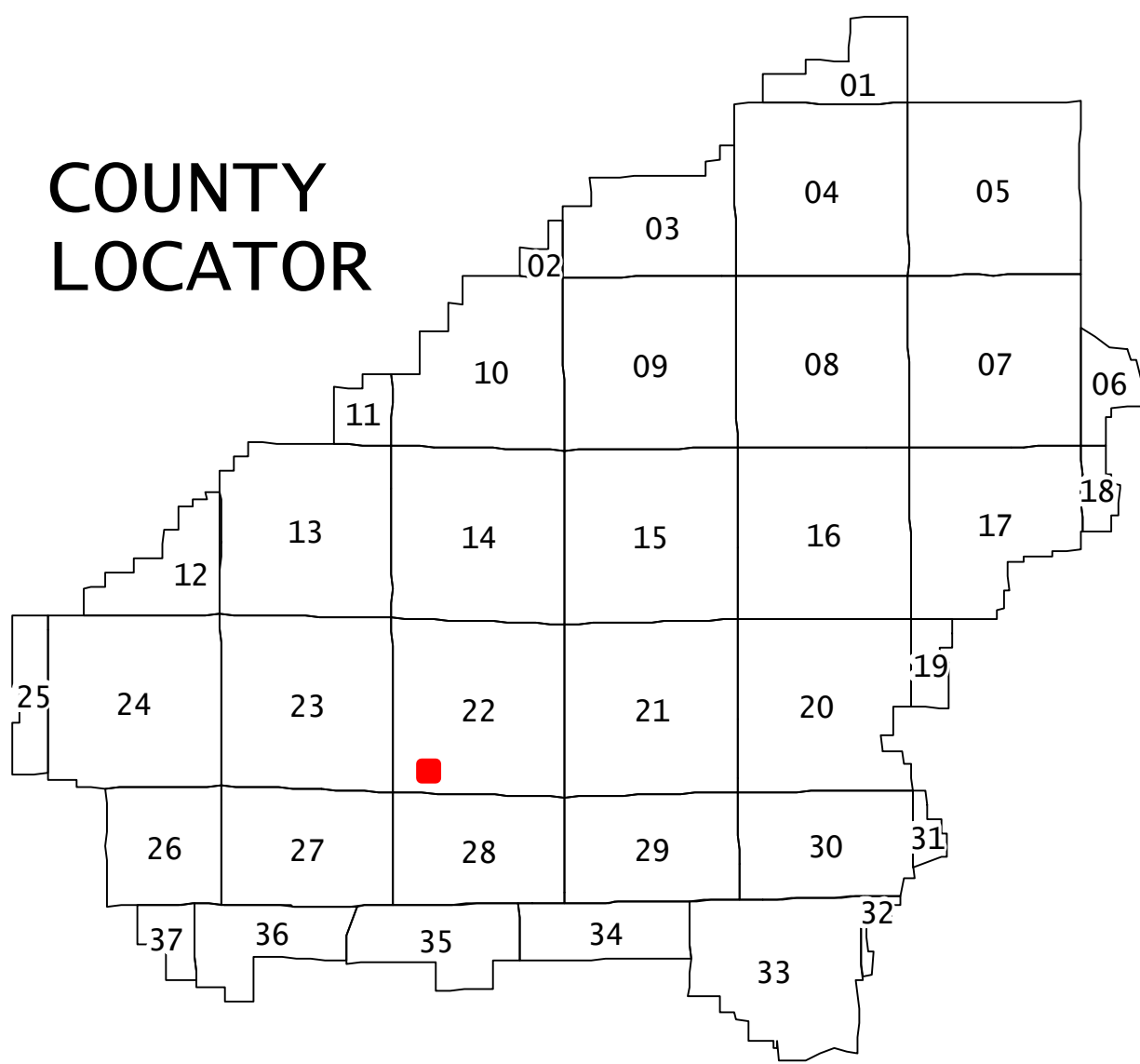


SHELBY COUNTY



COUNTY LOCATOR

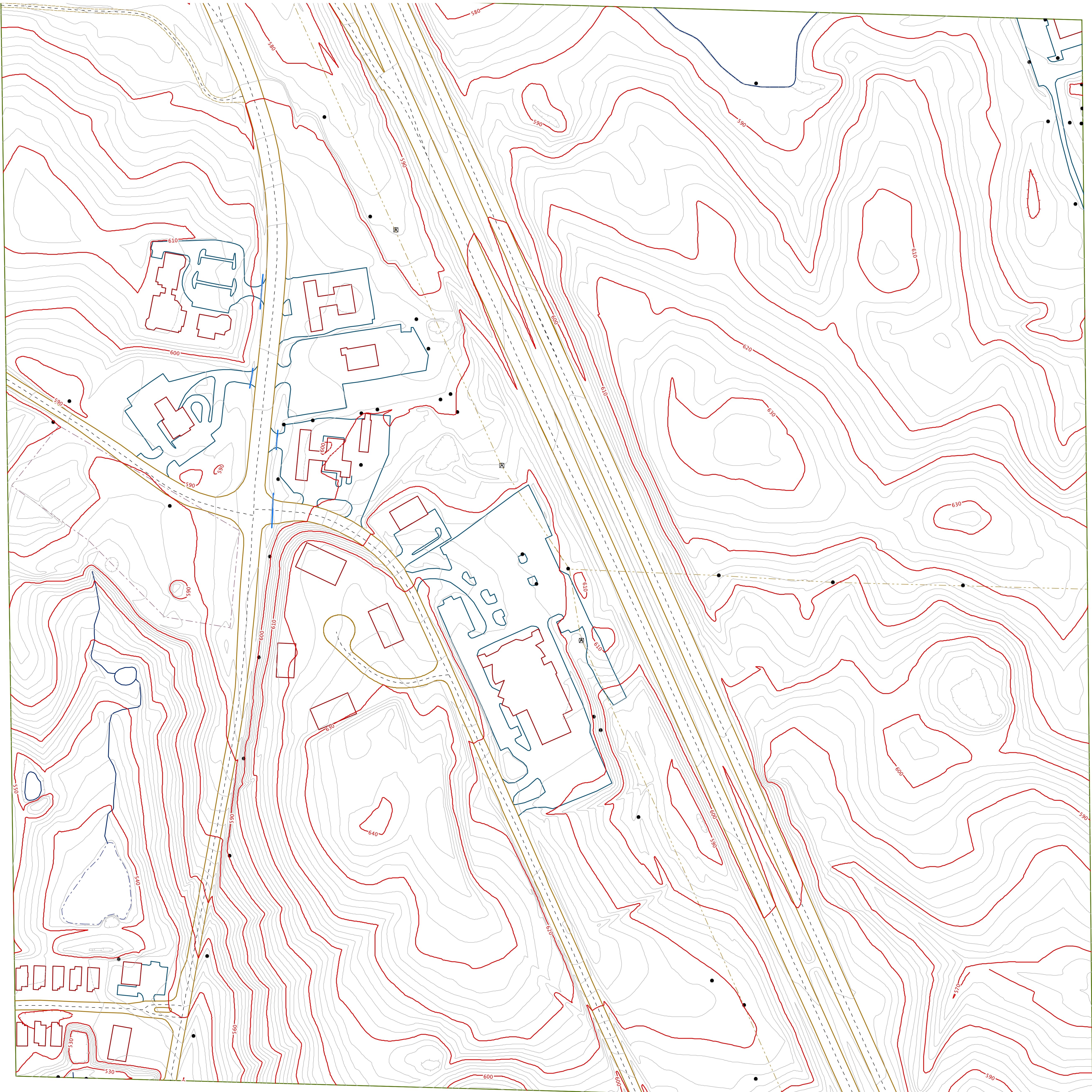


|             |             |             |
|-------------|-------------|-------------|
| 22-09-30-04 | 22-09-29-03 | 22-09-29-04 |
| 22-09-31-01 | 22-09-32-02 | 22-09-32-01 |
| 22-09-31-04 | 22-09-32-03 | 22-09-32-04 |

LEGEND

|  |                             |                            |
|--|-----------------------------|----------------------------|
| CONTOUR INDEX                            | TRANSMISSION OUTLINE        | MISCELLANEOUS_FEATURES     |
| CONTOUR INDEX DEPRESSION                 | TRANSMISSION TOWER          | QUARRY_OUTLINE             |
| CONTOUR INDEX HIDDEN                     | BUILDING_UNDER_CONSTRUCTION | RETAINING_WALL             |
| CONTOUR INDEX OBSCURED                   | BUILDINGS                   | STORAGE_STRUCTURE          |
| CONTOUR INDEX OBSCURED DEPRESSION        | CULVERT                     | SWIMMING_POOL              |
| CONTOUR INTERMEDIATE                     | DRAIN                       | UNDER_CONSTRUCTION_OUTLINE |
| CONTOUR INTERMEDIATE DEPRESSION          | HYDRO_HIDDEN                | AIRPORT_PAVED              |
| CONTOUR INTERMEDIATE HIDDEN              | SWAMP                       | BRIDGE                     |
| CONTOUR INTERMEDIATE HIDDEN DEPRESSION   | WATER_LINEAR                | RAILROAD                   |
| CONTOUR INTERMEDIATE OBSCURED            | WATER_POLYGONS              | ROAD_CENTERLINE            |
| CONTOUR INTERMEDIATE OBSCURED DEPRESSION | ATHLETIC_FIELD_COURT        | ROAD_PAVED                 |
| ANTENNA                                  | ATHLETIC_FIELD_OUTLINE      | ROAD_UNPAVED               |
| ELECTRIC_BOX                             | CEMETERY                    | ROAD_UNPAVED_TRAIL         |
| FIRE_HYDRANT                             | CONCRETE_SLAB               | SIDEWALK                   |
| LIGHT_POLE                               | DOCK                        | DRIVE_PAVED                |
| POWER_POLE                               | FENCE                       | DRIVE_UNPAVED              |
| TRANSMISSION_LINE                        | MISCELLANEOUS               | PARKING_PAVED              |
|  |                             | PARKING_UNPAVED            |

SECTION 32  
TOWNSHIP 21 SOUTH RANGE 2 WEST  
22-09-32-02  
MAP NUMBER



1. PHOTOGRAMMETRIC MAPPING CREATED FROM AERIAL PHOTOGRAPHY DATING MARCH 2005
2. 1983 NORTH AMERICAN DATUM, ALABAMA COORDINATE SYSTEM, WEST ZONE
3. GROUND CONTROL SUPPLIED BY MAXWELL ENG.
4. DASHED CONTOURS ARE APPROXIMATE DUE TO DENSE VEGETATION



SCALE: 1" = 100'

WARNING: BECAUSE OF VARIOUS PLOTTER LIMITS & SETTINGS THE PLOT SCALE MAY NOT EQUAL THE PUBLISHED MAP SCALE OF 1" = 100'

CONSULTING BY  
G-SQUARED L.L.C.  
WWW.GSQMAP.COM